

Setting up an On-Farm Tree Nursery

Seeds can be collected from healthy trees or from institutions like Kenya Forestry Research Institute, The Center for International Forestry Research and World Agroforestry, Forest Dept. etc.



1 Collecting soil

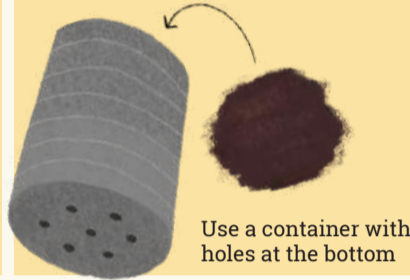
- Sieve to separate sticks and stones



Fertile, well-drained soil can be found along fences or under trees

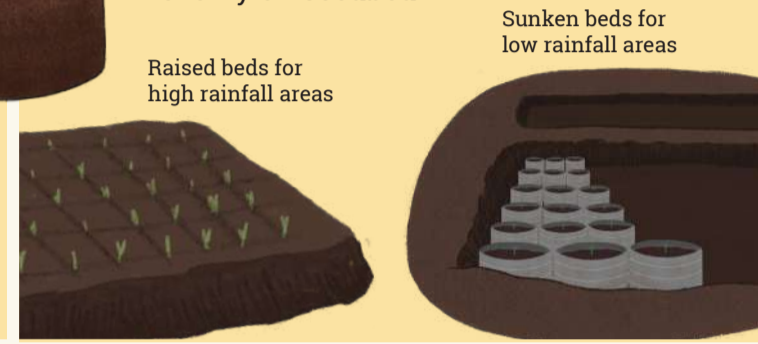
2 Potting

- Mix the soil with sand and manure
- Fill with container with the mix

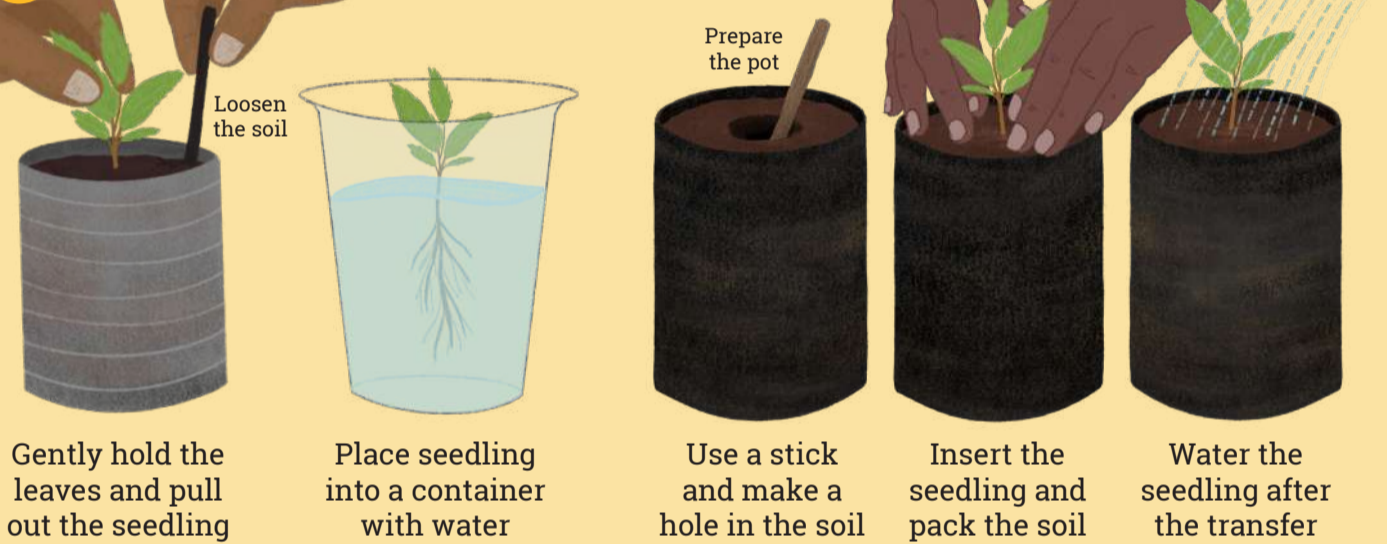


3 Sowing the seeds

- Sow seeds 2cm within the soil
- Mix fine seeds with sand, spread evenly on seedbed



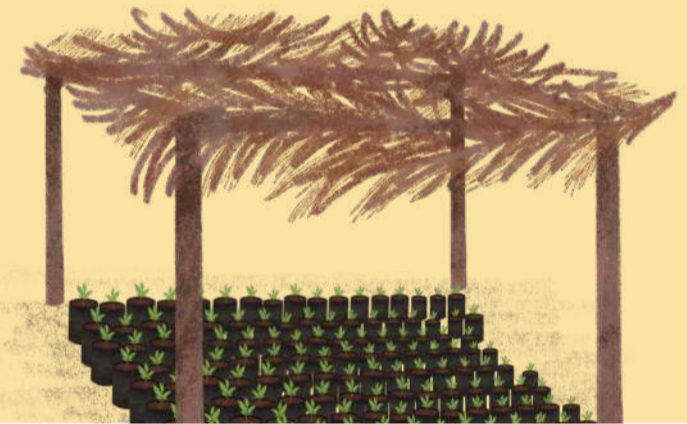
4 Pricking out the seedlings



5 Shading

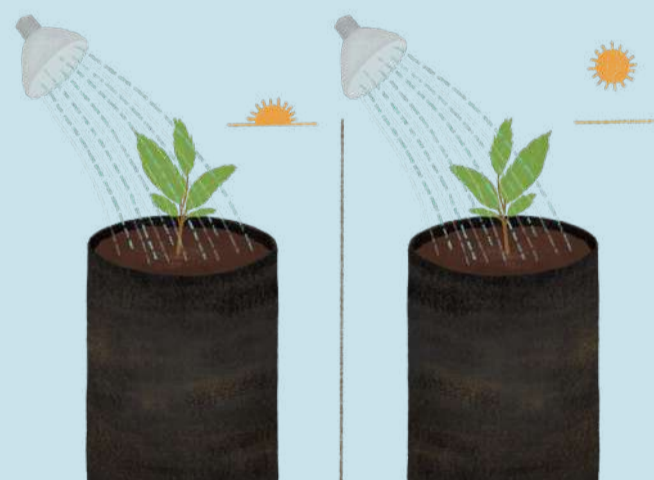
- Protect the seedlings from direct sunlight (2-3 weeks)

After all steps, harden off the seedlings by gradually acclimatising them to outdoor conditions. This should be done 2-3 weeks before planting.



CARING FOR SEEDLINGS: Three activities to grow healthy, strong saplings!

Watering - Twice a day: morning and late-afternoon



Weeding - Gently pull out weeds whenever observed



Pruning

- Water the seedling well before and after pruning
- Prune every 2-3 weeks

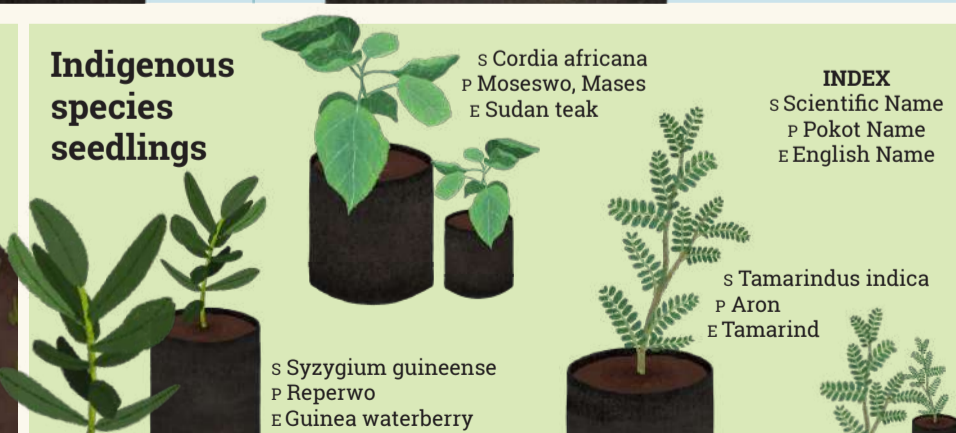


Mandala garden technique

Efficiently uses water, curbs soil erosion, retains moisture, ensuring high yields with minimal fertilizer use, and makes farming profitable with low input.



Indigenous species seedlings



s Cordia africana
P Moseswo, Mases
E Sudan teak

INDEX
s Scientific Name
P Pokot Name
E English Name

s Tamarindus indica
P Aron
E Tamarind

s Syzygium guineense
P Reperwo
E Guinea waterberry

This poster is a part of the women-led restoration initiative in Aramasaaai and Adoket villages around the Kamatira Forest in West Pokot, Kenya. The project was implemented by *Women4Biodiversity* in partnership with *Pastoral Communities Empowerment Programme (PACEP)*.

Learn more at bit.ly/Kamatira

Visual poster by Deepika Nandan / W4B

Building Resilience and Weaving Gender Approaches to Biodiversity Governance in Kamatira Forest, Kenya

Funding support from Sida, through SwedBio at Stockholm Resilience Centre



View PACEP's detailed guide on nursery establishment for more info

